



PE'AHĪ FARMS AT OPANA POINT

*Maui's North Shore Sustainable Community*

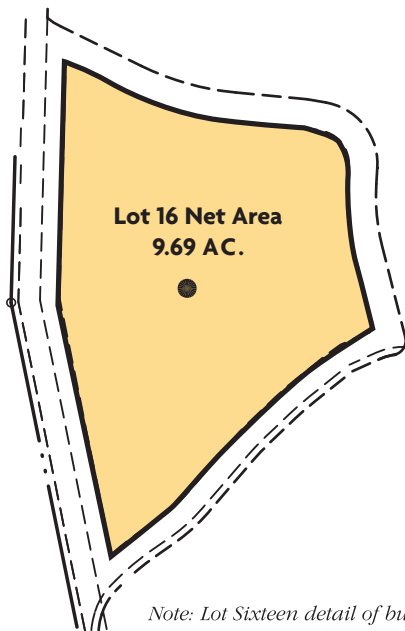


## *Lot Sixteen: The Farm*

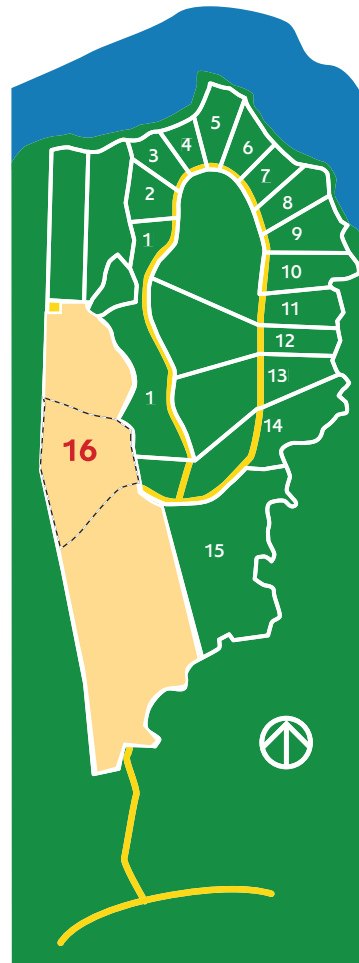
ACREAGE: 75.93 ±

Positioned between the mountain and the sea, the Farm's 83.6 acres is augmented by approximately 87 acres of agricultural easements. At a combined 170.6 acres, the Farm gains critical mass for an agricultural plan that makes economic sense. Capable of pasturing 300 head of cattle on high protein grass, farming 12 acres in organic fruit, and operating a tree and shrub nursery, the Farm is being established as a model of low impact, sustainable development. Boasting a wind turbine to offset energy

use and a fresh water catchment system, the Farm's three miles of road capture surface water which recharges the ground water, restores pond water for irrigation, and intensively controls erosion thereby protecting the beach and reef ecosystems.



*Note: Lot Sixteen detail of building envelope shown only.*



*For more information, please contact:*

AL CHIARELLA, R(BIC)  
**808.276.7777 (D)**

DAMIEN J. ZANOLINI, R(S)  
**808.281.4669 (D)**

COLDWELL BANKER ISLAND PROPERTIES  
1043 Makawao Ave Ste 109  
Makawao HI 96768

*All information is deemed reliable but is subject to change without notice. 10/27/06*